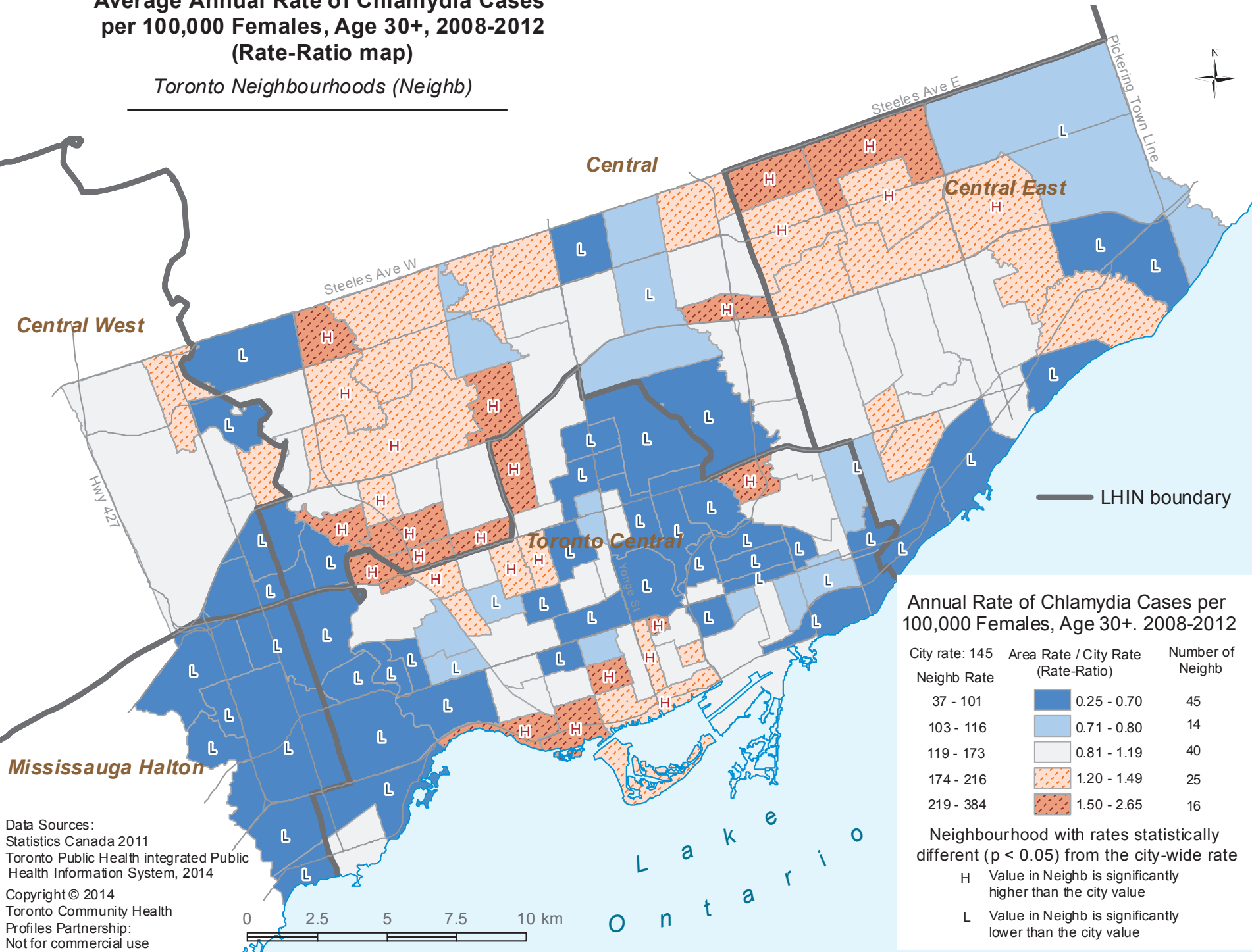


# Average Annual Rate of Chlamydia Cases per 100,000 Females, Age 30+, 2008-2012 (Rate-Ratio map)

Toronto Neighbourhoods (Neighb)



Annual Rate of Chlamydia Cases per 100,000 Females, Age 30+. 2008-2012

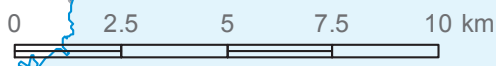
City rate: 145	Area Rate / City Rate (Rate-Ratio)	Number of Neighb
Neighb Rate		
37 - 101	0.25 - 0.70	45
103 - 116	0.71 - 0.80	14
119 - 173	0.81 - 1.19	40
174 - 216	1.20 - 1.49	25
219 - 384	1.50 - 2.65	16

Neighbourhood with rates statistically different ( $p < 0.05$ ) from the city-wide rate

- H Value in Neighb is significantly higher than the city value
- L Value in Neighb is significantly lower than the city value

Data Sources:  
 Statistics Canada 2011  
 Toronto Public Health integrated Public Health Information System, 2014

Copyright © 2014  
 Toronto Community Health Profiles Partnership:  
 Not for commercial use



L a k e r i o  
 O n t a r i o