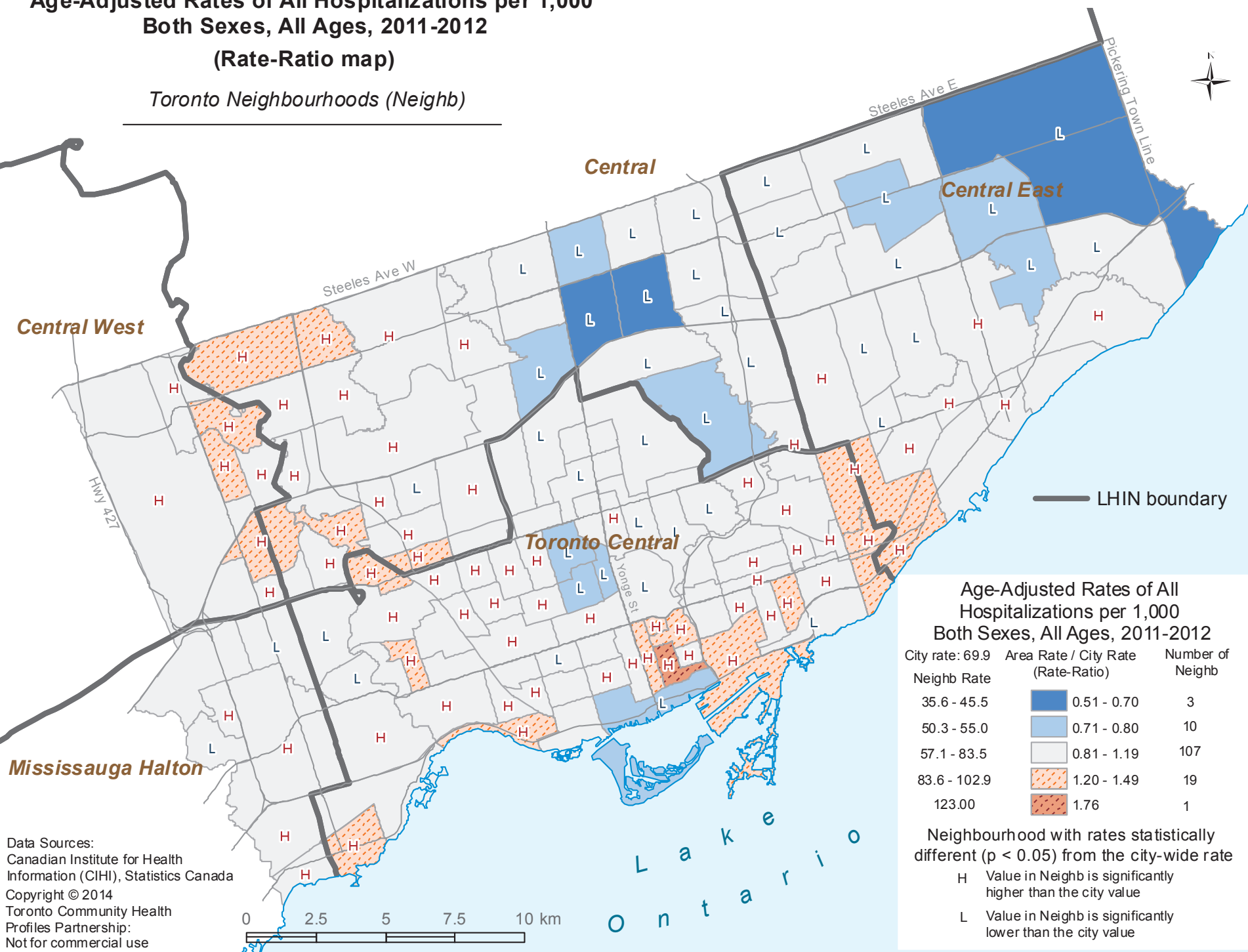


Age-Adjusted Rates of All Hospitalizations per 1,000 Both Sexes, All Ages, 2011-2012

(Rate-Ratio map)

Toronto Neighbourhoods (Neighb)



**Age-Adjusted Rates of All Hospitalizations per 1,000
Both Sexes, All Ages, 2011-2012**

City rate: 69.9	Area Rate / City Rate (Rate-Ratio)	Number of Neighb
Neighb Rate		
35.6 - 45.5	0.51 - 0.70	3
50.3 - 55.0	0.71 - 0.80	10
57.1 - 83.5	0.81 - 1.19	107
83.6 - 102.9	1.20 - 1.49	19
123.00	1.76	1

Neighbourhood with rates statistically different ($p < 0.05$) from the city-wide rate

- H Value in Neighb is significantly higher than the city value
- L Value in Neighb is significantly lower than the city value

Data Sources:
Canadian Institute for Health Information (CIHI), Statistics Canada
Copyright © 2014
Toronto Community Health Profiles Partnership:
Not for commercial use

