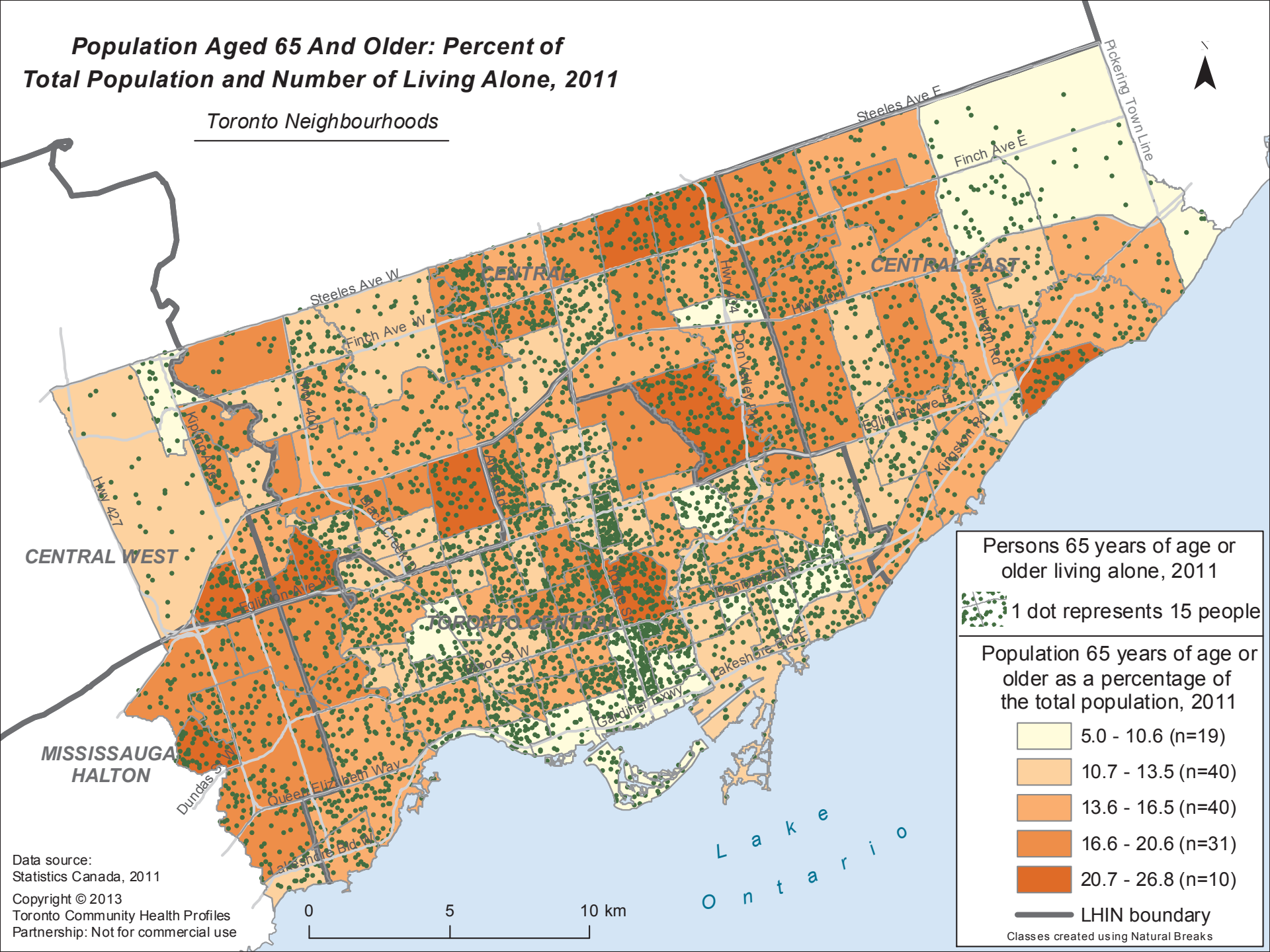


# Population Aged 65 And Older: Percent of Total Population and Number of Living Alone, 2011

## Toronto Neighbourhoods



Persons 65 years of age or older living alone, 2011

1 dot represents 15 people

Population 65 years of age or older as a percentage of the total population, 2011

- 5.0 - 10.6 (n=19)
- 10.7 - 13.5 (n=40)
- 13.6 - 16.5 (n=40)
- 16.6 - 20.6 (n=31)
- 20.7 - 26.8 (n=10)

— LHIN boundary

Classes created using Natural Breaks

Data source:  
 Statistics Canada, 2011  
 Copyright © 2013  
 Toronto Community Health Profiles  
 Partnership: Not for commercial use

0 5 10 km

L a k e  
 O n t a r i o